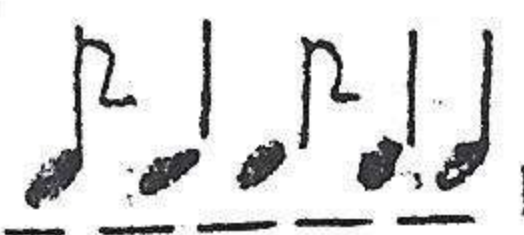


ΓΗΤΕΟ ΤΟ ΣΟΜΑ ΜΟΥ



INTRO 3/8

Musical notation for the first system, including treble and bass staves with notes and chords.

Chords: Em, Am, Em 5/4

3/8

Musical notation for the second system, including treble and bass staves with notes and chords.

Chords: Dm, Em, Am

Time signature: 4/4

FINE CANTO

Musical notation for the third system, including treble and bass staves with notes and chords.

Chords: Em, 5/4 Dm, Em, 4/4, 5/4

Musical notation for the fourth system, including treble and bass staves with notes and chords.

Chords: Em, G, F, Em, 4/4 Am, 5/4 Am, Em, 4/4 Em, 5/4

Musical notation for the fifth system, including treble and bass staves with notes and chords.

Chords: Em, F, 4/4 Dm, 5/4 Dm, Em, REFRAIN ACCOR. 2, 4/4, 5/4

Musical notation for the sixth system, including treble and bass staves with notes and chords.

Chords: C, E7, Am, 4/4 Am, Em, 5/4 Dm, F, Em

Time signature: 3/8

Page number: 46